

LAARMANN[®]

Innovators in Solids

GRAPHITE LM2000 PULVERISER RING



Laarmann Group B.V.
Op het Schoor 6
6041 AV Roermond
Netherlands

info@laarmann.eu
www.laarmann.eu
webshop.laarmann.eu
+31 6 23 40 00 33

GRAPHITE APPLICATION

Sample Material: Graphite Sample

Original sample material with feed size of up to 80mm length



Picture 1



Picture 2



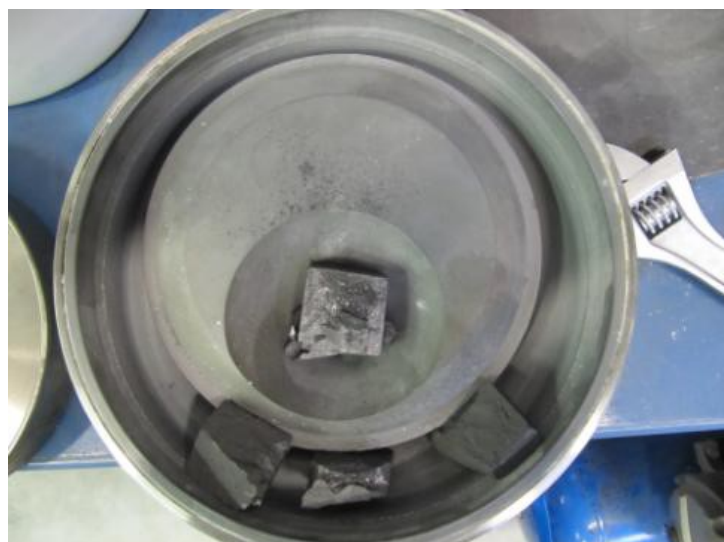
Picture 3

The Sample milled with the Pulverizer LM2000 and a 2000ml Bowl. Grinding time about 2 minutes for 2 bricks.

GRAPHITE APPLICATION



Picture 4



Picture 5



Picture 6

Final result after 4 minutes milling time. Homogeneously mixed and the final fineness of $<100\mu\text{m}$ ready for X-Ray analysis. A prolongation of the grinding time will increase the end fineness.

Grinding parameters

| | |
|-----------------------|---|
| Grinding system: | LM2000 Pulveriser Ring Mill |
| Accessories: | 2000ml grinding bowl of standard steel for sample 1 1000ml grinding bowl of syalon ceramic for sample 2 |
| Sample material: | Graphite |
| Product feed size: | Pieces of up to 80mm |
| Grinding time: | 2 minutes for 1A and 4 minutes for 2A Sample amount: 230 gr per process |
| Result after sieving: | Graphite Samples / homogeneously milled due to the patented system of disc about 95% $< 100 \mu\text{m}$ |

Recommendation

In order to grind and to homogeneously mix graphite samples in about 120-240 secs. we recommend the use of the LM2000 Pulverizer under the above mentioned grinding conditions. A prolongation of the grinding time will increase the end-fineness. **With our LM5000 Pulverizer it is even possible to grind a much larger amount in one grinding process down to 200 microns.** A pre-crushing is not necessary to feed the bowl.