

LMFTM FLOTATION MACHINE

Laboratory Flotation Machine

SUPERIOR FLOTATION MACHINE
FOR PROVIDING AN ACCURATE
RELIABLE MEANS OF
REPRODUCING TEST RESULTS

- Digital control by touch screen
- Flotation cells capacities from 0,2 - 7 Litres
- Standard square and round cells from various materials:
stainless steel, acrylic, pu-coated, PTFE coated
- Cells and impellers for high temperature flotation made from
stainless steel
- Impellers & diffuser made from various materials: stainless
steel, acrylic, pu-coated, PTFE coated



Description

The versatile Laboratory Flotation Bench has been designed to provide an accurate reliable means of re-producing test results. It is ideally suited in duplicating plant processes and operations.

The laboratory flotation bench can be used for :

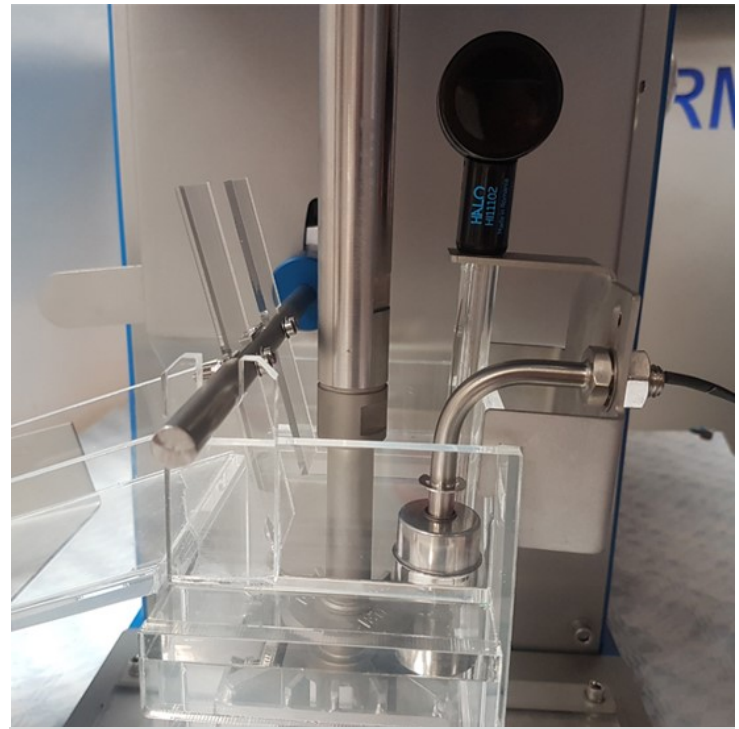
- Flotation
- Attritioning
- Blending
- Agitating

Several configurations are available for impeller style and diffuser arrangement. All wetted metal parts are made of high quality 316 stainless steel construction. To set up and control the parameters there is a digital touch screen.

Flotation cells

Cells are made from clear acrylic with impellers of polyurethane. The cell will handle materials ground to 500 - 750 μm . For high temperature flotation or attrition testing, a stainless steel cell and impeller must be used.

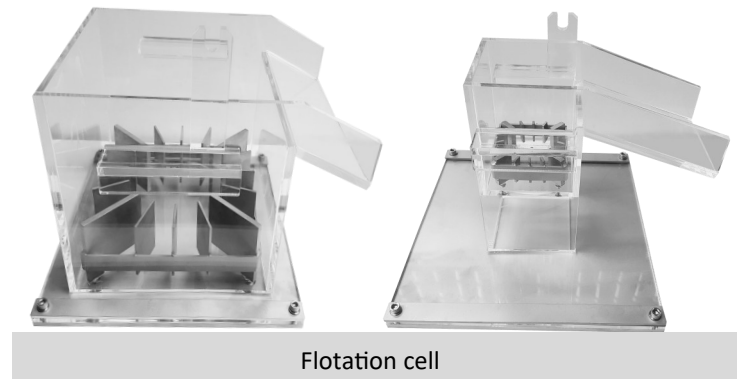
We can produce different volumes of flotation cells from 0,20 litres up to 7 litres



Cell with auto froth remover



acrylic and stainless steel flotation cells in various volumes



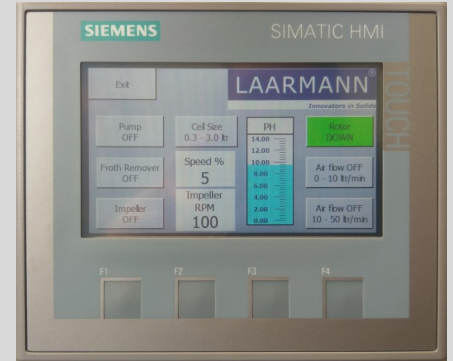
Flotation cell



Flotation rotors

Features and benefits

- Digital set up and control by touch screen
- Speed setting
- Filling level control
- Air pump
- Foam remover by skimmer
- PH value
- Round cells



Flotation machine models



LMFTM Flotation machine



LMFTM Flotation machine bottom driven



Flotation machine with temperature meter

Technical data

Flotation cells capacity	0,2 - 7 litres
Impellers	Interchangeable, corresponding to cell
Electrical requirements	0,55KW/220V/50Hz, other available on request
Impeller speed / Electronic	100 - 2000 rpm
Compressed air supply	5 - 10 kpa
Approximate mass	75 kgs
Shaft diameter	20 mm
Dimensions (machine)	Depending on version